

# UHF RFID Fixed Reader Selection Guide

RODINBELL

---

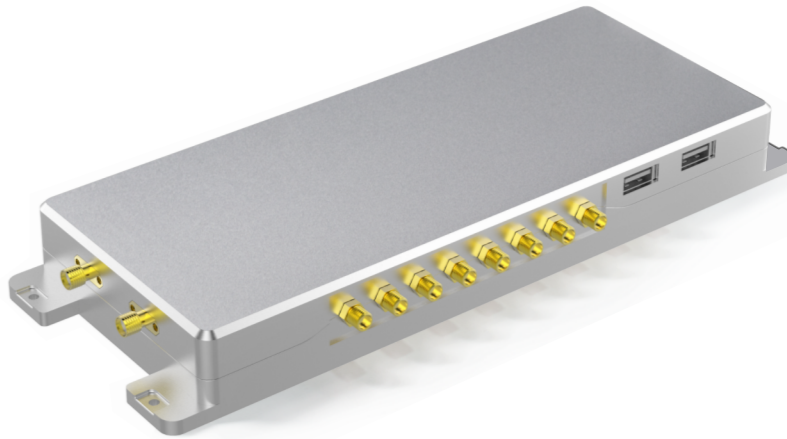
Please refer to the datasheet for detailed product parameters.

Size of each product in the table is the proportion of a real object.

# UHF RFID Fixed Reader Selection Table

## Spider AI

8-Port UHF RFID Fixed Reader



AI computing platform built by independent NPU comprehensively improves the efficiency of face recognition, image processing and other algorithms.

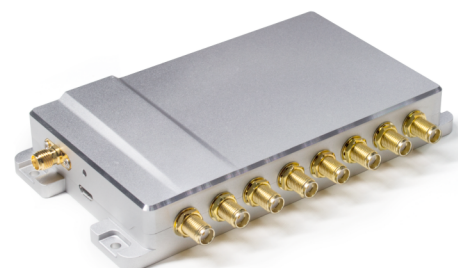
## Spider 8000 pro

8-Port UHF RFID Fixed Reader



## Spider 8000

8-Port UHF RFID Fixed Reader



Perfect combination of extremely simple appearance and rich functionality.  
High integration makes application and deployment easier.

# UHF RFID Fixed Reader Selection Table

## S-8800

8-Port UHF RFID Fixed Reader



## S-8600

4-Port UHF RFID Fixed Reader



Industry classic since 2012.

## D-100/101

UHF RFID Desktop Reader



Small and beautiful, easy to use

## UHF RFID Fixed Reader Parameter Comparison

	Spider AI	Spider 8000 Pro	Spider 8000	S-8800	S-8600	D-100/101
						
Operation System	Android 8.1	Linux 4.9.11 / Android 7.0	Linux 4.9.11	\	\	\
CPU	Hexa-core 64 bit processor (Dual-core Cortex-A72+Quad-core Cortex-A53) Frequency is up to 1.8GHz	Freescale IMX6Q (Quad-Core)	Freescale IMX6DL (Dual-Core)	\	\	\
GPU	Mali-T860MP4 GPU Supports OpenGL ES1.1/ 2.0/ 3.0/ 3.1, OpenVG1.1, OpenCL, DX11	Vivante GC2000/ Vivante GC355/ Vivante GC320	Vivante GC2000/ Vivante GC355/ Vivante GC320	\	\	\
NPU	1G independent RAM computing power up to 3.0TOPs Supports multiple face recognition algorithms Supports TensorFlow/Caffe Model	\	\	\	\	\
RAM+ROM	2G+32G 4G+64G <span style="color: orange;">Optional ✓</span>	2G+16G 4G+32G <span style="color: orange;">Optional ✓</span>	1G+8G	\	\	\
RFID Output Power	0-33dBm	0-33dBm	0-31.5dBm	0-33dBm	0-33dBm	18-26 dBm
Input Voltage	DC 12V~24V	DC 9V~24V	DC 9V~24V	DC 12V~18V	DC 12V~18V	DC 3.5V - 5 V / 9V
POE Power Supply	\	25W maximum Supports IEEE 802.3 protocol <span style="color: orange;">Optional ✓</span>	\	\	\	\
GPIO	4 inputs, 4 outputs Up to 5Kv isolation voltage	4 inputs, 4 outputs Up to 5Kv isolation voltage	4 inputs, 4 outputs Up to 5Kv isolation voltage	2 inputs, 2 outputs Up to 3750v isolation voltage	2 inputs, 2 outputs Up to 3750v isolation voltage	2 outputs
HDMI	1 HDMI2.0 (Type-A) interface Supports 4K/ 60fps output	1 HDMI2.0 (Type-A) interface Supports 4K/ 60fps output	1 HDMI2.0 (Type-A) interface Supports 4K/ 60fps output	\	\	\
WIFI	SMA interface Supports 2.4G/ 5G WIFI	SMA interface Supports 2.4G/ 5G WIFI	SMA interface Supports 2.4G/ 5G WIFI	\	\	\
Bluetooth	Bluetooth 5.0	Bluetooth 4.0	Bluetooth 4.0	\	\	\
Ethernet	10/ 100/ 1000Mbps ethernet	10/ 100/ 450Mbps ethernet	10/ 100/ 450Mbps ethernet	10/ 100Mbps ethernet	10/ 100Mbps ethernet	\
Serial Interface	4 RS232 interfaces 1 RS485 interface	1 RS232 interface 1 RS485 interface	\	1 RS232 interface	1 RS232 interface	1 RS232 interface
LTE	Supports LTE data service	Supports LTE data service	\	\	\	\
Industrial Bus	CAN Bus	\	\	\	\	\
Cameras Interface	2 USB3.0 (Type-A) cameras interfaces Supports dual 4K HD cameras input	\	\	\	\	\
Gyroscope	Nine axis (Acceleration+Gyroscope+Magnetometer)	Six axis (acceleration + gyroscope + Euler angle)	\	\	\	\
USB	2 USB2.0 Host (Type-A) interfaces 2 USB3.0 Host (Type-A) interfaces 1 USB3.0 OTG (Type-C) interface	1 Micro USB2.0 OTG interface	1 Micro USB2.0 OTG interface	\	\	\
Audio	1 Stereo audio output jack	1 Stereo audio output jack	\	\	\	\
SD Card	1 Micro SD3.0 slot	\	\	\	\	\
PSAM	1 Micro PSAM slot	1 Micro PSAM slot	\	\	\	\
Dimensions	250(L)*94(W)*29(H)mm	181.26(L)*160(W)*21(H)mm	133(L)*86(W)*22(H)mm	198(L)*198(W)*26(H)mm	240(L)*180(W)*28(H)mm	122(L)*84(W)*20(H)mm