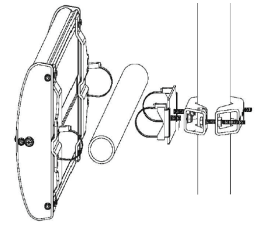


Pole bracket for installing outdoor Wide Range 30° antennas and ARU-CSB readers.



> General specifications

Order No.		52010005
Type		MK-AMB-10-Outdoor
Max. load-bearing capacity	[kg]	6.0
Adjustment range		
Elevation (mounting on vertical mast)	[°]	± 30
Azimuth (mounting on horizontal mast)	[°]	± 30
Usable mast diameters	[mm]	42 to 125
Usable mounting pipe diameters	[mm]	45 to 125
Minimal length mounting pipe		
for WIRA 30 antennas	[mm]	649
for ARU CSB readers	[mm]	741
Weight	[kg]	1.36
Packing size (L x W x H)		195 x 142 x 65
Material		
Bracket		galvanized steel sheet
Screws/hose clips		stainless steel

> Usable with the following

ARU-CSB Antenna Reader Series	Order No.	Type
	52010263	ARU-CSB-ELC-ETSI
	52010264	ARU-CSB-ELC-FCC
WIRA 30 Antenna Series	Order No.	Type
	52010086	WIRA-30-circular-ETSI
	52010087	WIRA-30-circular-FCC
	52010227	WIRA-30-CSB-KRAI-ETS
	52010228	WIRA-30-CSB-KRAI-FCC
	52010248	WIRA-30-linear-ETSI
	52010249	WIRA-30-linear-FCC

> Remarks

Scope of delivery

- 1x mast clamp pre-assembled [1]
- 1x mounting plate [2]
- 4x hose clip (torque 6.2 Nm) [3]
- 2x hex head cap screw M6x16
- 2x hex head cap screw M8x20 (torque 19 Nm) [4]
- 2x flat washer 6.4mm
- 2x flat washer 8.4mm [5]
- 2x hex nut M8 [6]

➤ **Selecting the installation location**



Before drilling the holes, make sure there are no electrical cables in the wall.

Risk of fatal injury due to electric shock!

Make sure that the wall / the mast have adequate load-bearing capacity. Use suitable fastenings (not included).
If necessary, enforce the wall at your chosen installation location, or use a different mast.

➤ **Dimensions [mm]**

Mast Installation

